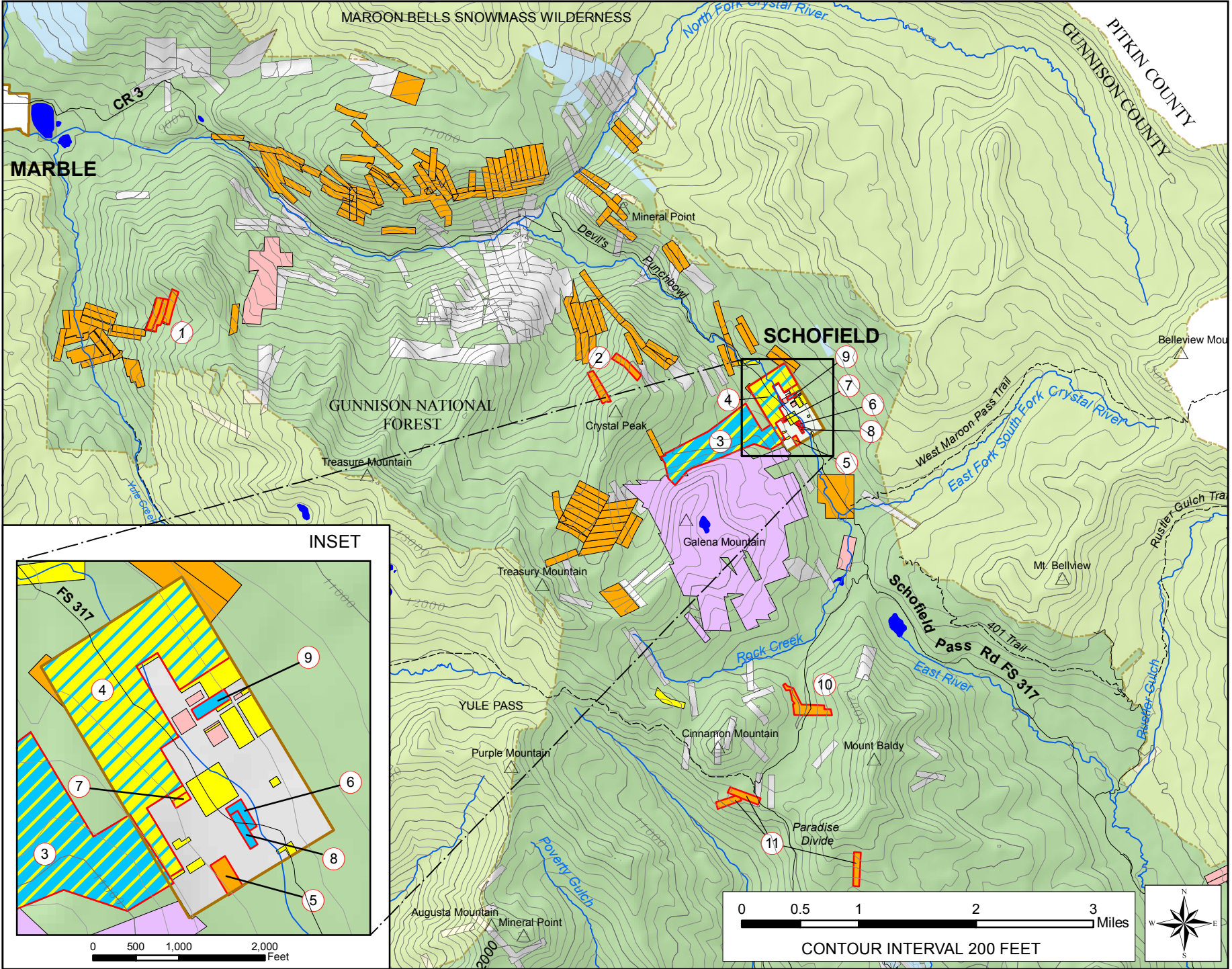
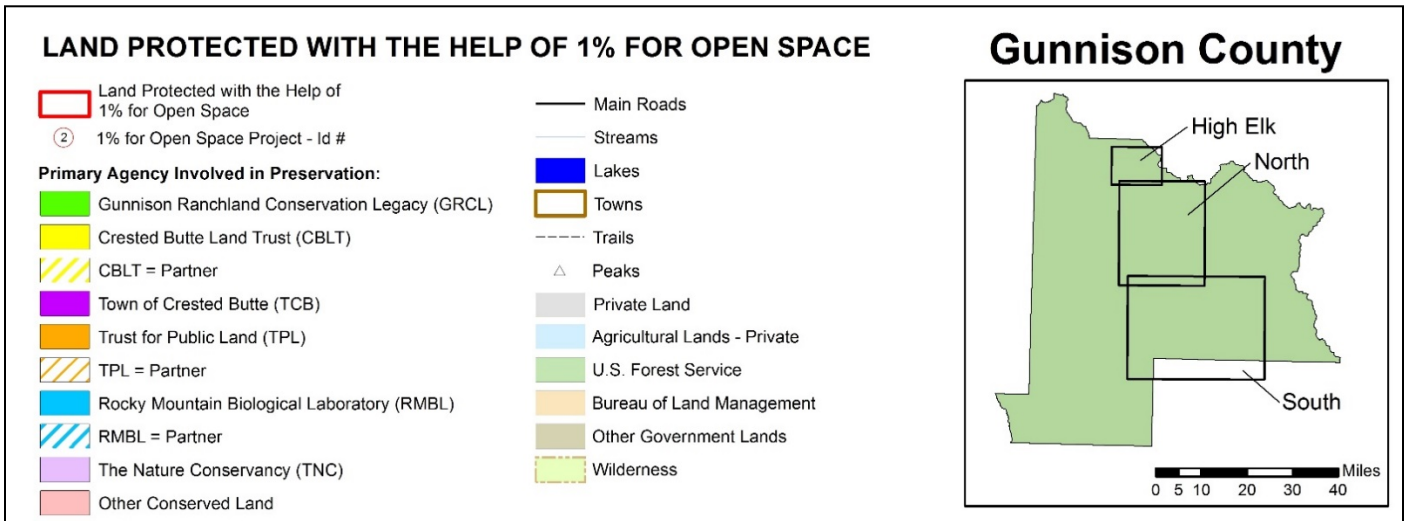


1% for Open Space Funded Properties High Elk Corridor Map



Properties

#	PROPERTY	ACRES	YEAR
1	Yule Creek	23	2007
2	Crystal Peak	23	2007
3	North Pole Basin	158	2012 & 2013
4	Schofield Park	74	1999 & 2005
5	Schofield Park	2	2006
6	Schofield Park	1.1	2009
7	Schofield Park	0.5	2010
8	Schofield Park	1.1	2011
9	Schofield Park	1.89	2011
10	Paradise Basin	23	2007
11	Paradise Divide	28	2007
12	Avery Peak	10	2004
13	Washington Gulch	53	1999
14	Maxfield Meadows (Gothic Meadows)	44	2004
15	Gunsight Bridge	120	2002
16	Kikel / Slate River Trailhead	70	2007 & 2008
17	Kochevar, Phase II	110	2010
18	Lower Loop	193	1998 & 1999
19	Woods Walk	83	1999 & 2001
20	Snodgrass (Promontory Ranch & Ingraham Parcels)	108	2014
21	Rec Path (Robinson Parcel)	131	1997
22	Cold Spring Ranch	190	2011
23	Lazy F Bar Ranch	180	1998
24	Kebler Pass	320	1999
25	Baxter Gulch Trail Easement	11	2010
26	Rozman Ranch North	150	2008
27	Rozman Ranch South	319	2004
28	Niccoli Ranch East	37	2006
29	Niccoli Ranch West	146	2000
30	Guerrieri Ranch-Mill Creek Mountain	160	1999
31	Robbins Ranch-Steuben Creek	420	2005
32	Field Ranch-Tomichi Creek	160	2000
33	Tamarcaz	650	2000
34	Peterson Ranch-Razor Creek	150	2001
35	Peterson Ranch-Razor Creek	430	2006
36	Peterson Ranch-Razor Creek	460	2012
37	Lower Tomichi Creek Restoration	1,000	2014
38	Gunnison Whitewater Park Reconst	18	2014
39	Trampe Ranch - UERV	1254	2018
40	Trampe Ranch - Farris Creek	1392	2018
41	Trampe Ranch - Jack's Cabin	284	2017
42	Trampe Ranch - Home Ranch	1447	2017



How to Read This Map

When land is preserved it is often a collaboration between a variety of local and statewide entities. The intricacies of such relationships and transactions are virtually impossible to demonstrate on a two-dimensional map.

Each 1% for Open Space funded property is associated with an organization represented by a color on this map. This indicates the organization who applied to 1% for the funds. This may not indicate who currently owns the property, nor who holds the conservation easement.

For preserved properties not assisted with 1% funds, color is chosen on basis of land ownership first, conservation easement holder second, project instigator third. In cases of private ownership, such as in working ranches, color indicates project instigator or easement holder.

Please note that not all preserved properties are open to the public by request of the private land owner. Working ranches are excellent examples of this.

For complete details on each 1% funded property please visit www.1percentforopenspace.org.